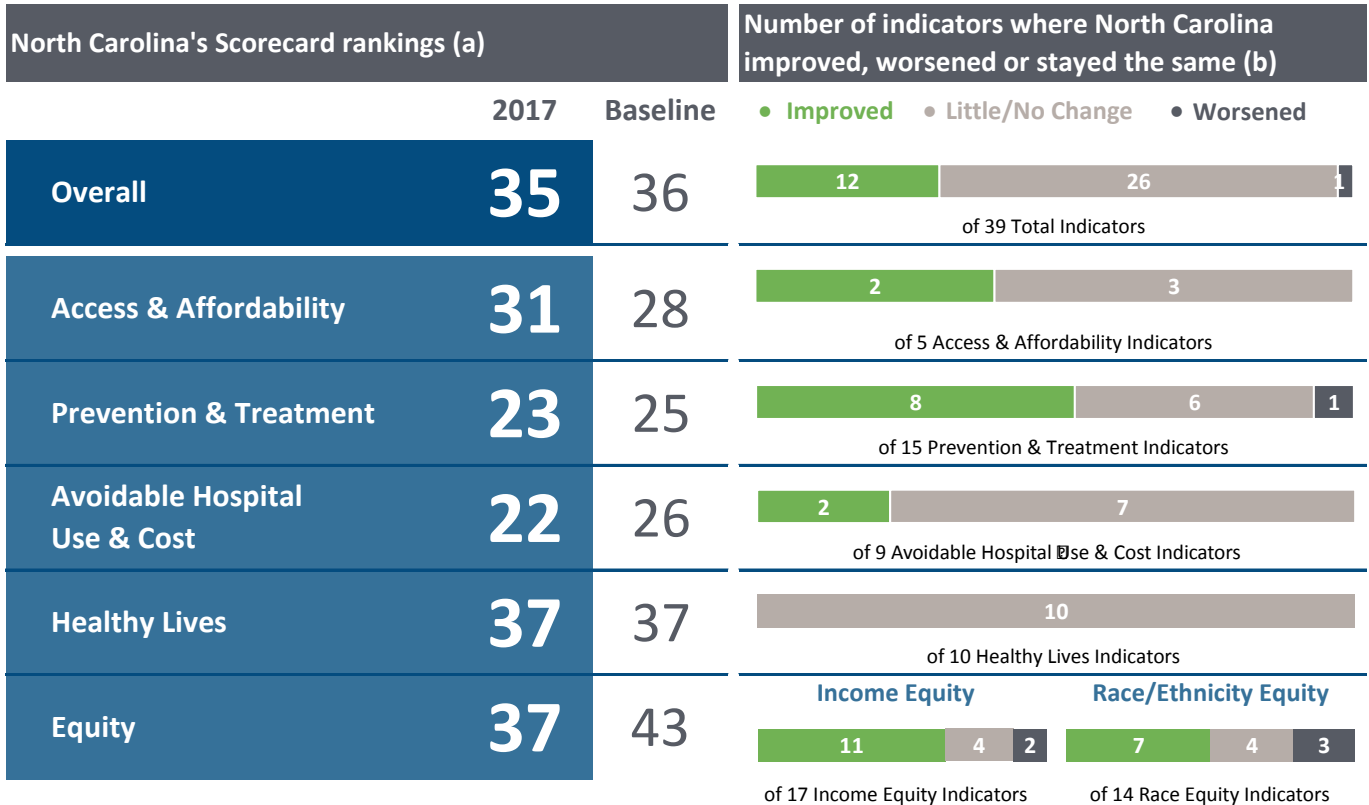
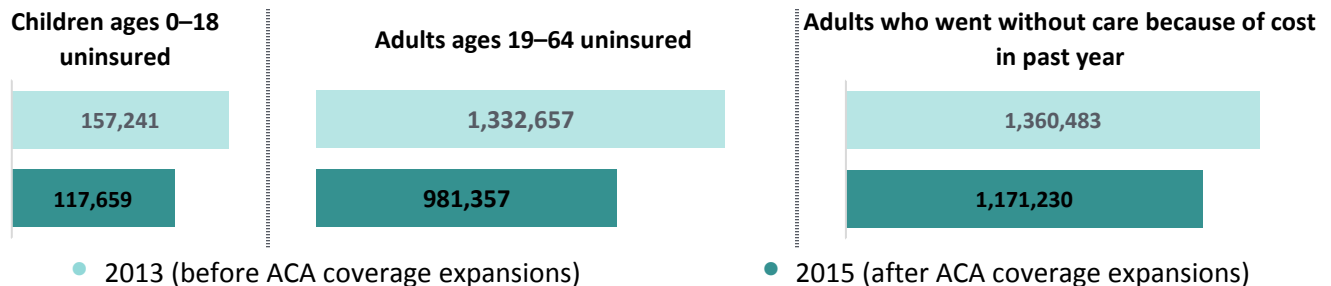


Commonwealth Fund Scorecard on State Health System Performance, 2017

North Carolina



Before and after implementation of the Affordable Care Act (ACA) coverage expansions



Estimated impact of state improvement (c)

If North Carolina improved to the level of the best-performing state for this indicator, then:	
834,448	more adults (age 18 and older) would have a usual source of care to help ensure that care is coordinated and accessible when needed
225,897	more adults would receive age- and gender-appropriate recommended cancer screenings
8,690	more children (ages 19-35 months) would receive all recommended vaccines
46,667	fewer Medicare beneficiaries would receive an unsafe medication
3,579	fewer premature deaths (before age 75) would occur from causes that are potentially treatable or preventable with timely and appropriate care
67,527	fewer emergency department visits for nonemergent or primary-care-treatable conditions would occur among Medicare beneficiaries

Commonwealth Fund Scorecard on State Health System Performance, 2017

Table 1. State Health System Performance Indicator Data by Dimension

Dimension and indicator	Data year	State rate	U.S. average	Best state rate	State ranking	Data year	State rate	U.S. average	Substantial change over time (a)
ACCESS & AFFORDABILITY					2017 Scorecard		Baseline		
Adults ages 19–64 uninsured	2015	16	13	4	37	2013	23	20	Improved
Children ages 0–18 uninsured	2015	5	5	1	26	2013	6	8	No Change
Adults who went without care because of cost in past year	2015	15	13	7	39	2013	18	16	Improved
Individuals under age 65 with high out-of-pocket medical costs relative to their annual household income	2014-15	17	14	10	41	--	--	--	--
At-risk adults without a routine doctor visit in past two years	2015	11	13	6	10	2013	12	14	No Change
Adults without a dental visit in past year	2014	14	16	11	12	2012	15	15	No Change
PREVENTION & TREATMENT					2017 Scorecard		Baseline		
Adults with a usual source of care	2015	78	78	89	29	2013	73	76	Improved
Adults with age- and gender-appropriate cancer screenings	2014	72	68	77	8	2012	71	69	No Change
Adults with age-appropriate vaccines	2015	45	38	51	4	2013	44	36	No Change
Children with a medical home	2011/12	55	54	69	35	--	--	--	--
Children with a medical and dental preventive care visit in the past year	2011/12	67	68	81	31	--	--	--	--
Children with emotional, behavioral, or developmental problems who received needed mental health care in the past year	2011/12	54	61	86	42	--	--	--	--
Children ages 19–35 months who received all recommended doses of seven key vaccines	2015	76	72	81	10	2013	72	70	Improved
Medicare beneficiaries who received at least one drug that should be avoided in the elderly	2014	15	13	7	41	2012	20	17	Improved
Medicare beneficiaries with dementia, hip/pelvic fracture, or chronic renal failure who received a prescription drug that is contraindicated for that condition	2014	19	18	10	39	2012	21	21	Improved
Medicare fee-for-service patients whose health provider always listens, explains, shows respect, and spends enough time with them	2014	77	76	80	9	2013	76	76	Improved
Risk-adjusted 30-day mortality among Medicare beneficiaries hospitalized for heart attack, heart failure, pneumonia, or stroke	07/2012 - 06/2015	14.9	14.5	13.1	32	07/2010 - 06/2013	13.7	13.2	Worsened
Central line-associated bloodstream infections (CLABSI), Standardized Infection Ratio	2014	0.42	0.50	0.23	13	2013	0.53	0.54	Improved
Hospitalized patients given information about what to do during their recovery at home	2015	87	87	90	23	2013	87	86	No Change
Patients who reported hospital staff always managed pain well, responded when needed help to get to bathroom or pressed call button, and explained medicines and side effects	2015	69	68	74	18	2013	69	68	No Change
Home health patients who get better at walking or moving around	2015	66	66	72	26	2013	61	61	Improved
Home health patients whose wounds improved or healed after an operation	2015	90	90	95	25	2013	90	89	No Change
High-risk nursing home residents with pressure sores	2015 (Q2-Q4)	7	6	3	38	2013 (Q2-Q4)	7	6	No Change
Long-stay nursing home residents with an antipsychotic medication	2015 (Q2-Q4)	14	17	8	9	2013 (Q2-Q4)	16	21	Improved

Commonwealth Fund Scorecard on State Health System Performance, 2017

Table 1. State Health System Performance Indicator Data by Dimension (continued)

	Data year	State rate	U.S. average	Best state rate	State ranking	Data year	State rate	U.S. average	Substantial change over time (a)
Dimension and Indicator									
2017 Scorecard					Baseline				
Hospital admissions for pediatric asthma, per 100,000 children	2013	112	107	27	26	2011	109	107	No Change
Hospital admissions among Medicare beneficiaries for ambulatory care–sensitive conditions, ages 65–74, per 1,000 beneficiaries (b)	2014	28	27	12	28	2012	29	29	No Change
Hospital admissions among Medicare beneficiaries for ambulatory care–sensitive conditions, age 75 and older, per 1,000 beneficiaries (b)	2014	64	66	35	22	2012	67	70	No Change
Medicare 30-day hospital readmissions, rate per 1,000 beneficiaries	2014	27	27	10	19	2012	35	34	Improved
Short-stay nursing home residents readmitted within 30 days of hospital discharge to nursing home	2014	18	19	11	19	2012	20	20	Improved
Long-stay nursing home residents hospitalized within a six-month period	2014	16	16	5	24	2012	18	17	No Change
Home health patients also enrolled in Medicare with a hospital admission	2015	16.1	16.2	13.9	21	2013	16.0	16.0	No Change
Potentially avoidable emergency department visits among Medicare beneficiaries, per 1,000 beneficiaries	2014	205	185	129	42	2012	197	188	No Change
Total reimbursements per enrollee (ages 18–64) with employer-sponsored insurance	2014	\$4,201	\$4,569	\$3,217	19	2013	\$4,346	\$4,489	No Change
Total Medicare (Parts A & B) reimbursements per beneficiary	2014	\$8,271	\$8,819	\$5,592	22	2012	\$8,158	\$8,854	No Change
2017 Scorecard					Baseline				
HEALTHY LIVES									
Mortality amenable to health care, deaths per 100,000 population	2013-14	92.4	84.2	54.3	36	2011-12	92.9	84.0	No Change
Years of potential life lost before age 75	2014	7,084	6,447	4,892	34	2012	7,029	6,412	No Change
Breast cancer deaths per 100,000 female population	2014	21	20.6	14.2	29	2012	21.5	21.4	No Change
Colorectal cancer deaths per 100,000 population	2014	14.4	14.3	10.9	25	2012	14.5	14.9	No Change
Suicide deaths per 100,000 population	2014	13.0	13.0	7.8	17	2012	12.7	12.6	No Change
Infant mortality, deaths per 1,000 live births	2013	7.0	6.0	4.2	41	2012	7.4	6.0	No Change
Adults ages 18–64 who report fair/poor health or activity limitations because of physical, mental, or emotional problems	2015	26	26	20	27	2013	27	26	No Change
Adults who smoke	2015	19	17	9	32	2013	20	18	No Change
Adults ages 18–64 who are obese (BMI >= 30)	2015	31	29	20	30	2013	30	29	No Change
Children ages 10–17 who are overweight or obese (BMI >= 85th percentile)	2011/12	31	31	22	27	--	--	--	--
Adults ages 18–64 who have lost six or more teeth because of tooth decay, infection, or gum disease	2014	13	10	6	38	2012	13	10	No Change

Commonwealth Fund Scorecard on State Health System Performance, 2017

Table 2. State Equity Indicator Data

The Equity profile displays gaps in performance for vulnerable populations for selected indicators. An equity gap is defined as the difference between the U.S. national average for a particular indicator and the rate for the state's most vulnerable group by income and race/ethnicity. For all equity indicators, lower rates are better; therefore, a positive or negative gap value indicates that the state's most vulnerable group is better or worse than the U.S. average for a particular indicator.

Equity Type and Indicator	Data year	Vulnerable			State ranking	Data year	Vulnerable			Change in vulnerable group rate (b)
		group rate	U.S. average	Gap (a)			group rate	U.S. average	Gap (a)	
LOW-INCOME	2017 Scorecard					Baseline				
Uninsured ages 19–64	2015	32	13	-19	44	2013	42	20	-22	Improved
Adults who went without care because of cost in past year	2015	29	13	-16	46	2013	34	16	-18	Improved
At risk adults without a doctor visit	2015	13	13	0	15	2013	16	14	-2	Improved
Adults without a dental visit in past year	2014	22	16	-6	16	2012	25	15	-10	Improved
Adults without a usual source of care	2015	29	22	-7	36	2013	31	24	-7	No Change
Adults without age- and gender-appropriate cancer screenings	2014	33	32	-1	11	2012	38	31	-7	Improved
Adults without age-appropriate vaccines	2015	59	62	3	9	2013	62	64	2	Improved
Children without a medical home	2011/12	56	46	-10	33	--	--	--	--	--
Children without a medical and dental preventive care visit in the past year	2011/12	41	32	-9	31	--	--	--	--	--
Children ages 19–35 months without all recommended vaccines (c)	2014	23	28	5	4	2012	26	32	6	Improved
Elderly patients who received a high-risk prescription drug	2014	19	13	-6	41	2012	25	17	-8	Improved
Hospital admissions for pediatric asthma, per 100,000 children	2013	139	107	-32	16	2012	146	143	-3	No Change
Medicare admissions for ambulatory care–sensitive conditions (d)	2014	92	44	-48	30	2012	103	48	-55	Improved
Medicare 30-day hospital readmissions, per 1,000 beneficiaries (d)	2014	68	35	-33	29	2012	82	43	-39	Improved
Potentially avoidable ED visits among Medicare beneficiaries, per 1,000 beneficiaries (d)	2014	416	185	-231	46	2012	405	188	-217	Worsened
Adults with poor health-related quality of life	2015	43	26	-17	33	2013	43	26	-17	No Change
Adults who smoke	2015	25	17	-8	20	2013	27	18	-9	Improved
Adults who are obese	2015	41	29	-12	34	2013	41	29	-12	No Change
Adults who have lost six or more teeth	2014	23	10	-13	40	2012	21	10	-11	Worsened
RACE/ETHNICITY (e)	2017 Scorecard					Baseline				
Uninsured ages 19–64 (Hispanic ethnicity)	2015	52	13	-39	46	2013	59	20	-39	No Change
Adults who went without care because of cost in past year (Hispanic ethnicity)	2015	27	13	-14	44	2013	32	16	-16	Improved
At risk adults without a doctor visit (Hispanic ethnicity)	2015	29	13	-16	45	2013	31	14	-17	Improved
Adults without a dental visit in past year (Hispanic ethnicity)	2014	22	16	-6	18	2012	20	15	-5	Worsened
Adults without a usual source of care (Hispanic ethnicity)	2015	64	22	-42	51	2013	66	24	-42	No Change
Adults without age- and gender-appropriate cancer screenings (other race)	2014	37	32	-5	20	2012	33	31	-2	Worsened
Adults without age-appropriate vaccines (Hispanic ethnicity)	2015	68	62	-6	25	2013	62	64	2	Worsened
Children without a medical home (Hispanic ethnicity)	2011/12	64	46	-18	33	--	--	--	--	--

Commonwealth Fund Scorecard on State Health System Performance, 2017

Table 2. State Equity Indicator Data (continued)

The Equity profile displays gaps in performance for vulnerable populations for selected indicators. An equity gap is defined as the difference between the U.S. national average for a particular indicator and the rate for the state's most vulnerable group by income and race/ethnicity. For all equity indicators, lower rates are better; therefore, a positive or negative gap value indicates that the state's most vulnerable group is better or worse than the U.S. average for a particular indicator.

Equity Type and Indicator	Vulnerable				State ranking	Vulnerable				Change in vulnerable group rate (b)
	Data year	group rate	U.S. average	Gap (a)		Data year	group rate	U.S. average	Gap (a)	
RACE/ETHNICITY (continued)	2017 Scorecard					Baseline				
Children without a medical and dental preventive care visit in the past year (other race)	2011/12	40	32	-8	25	--	--	--	--	--
Children ages 19–35 months without all recommended vaccines (black race) (c)	2014	22	28	6	4	2012	38	32	-6	Improved
Mortality amenable to health care (black race)	2013-14	148	84.2	-64	27	2011-12	153.8	84.0	-69.80	Improved
Infant mortality, deaths per 1,000 live births (black race)	2012-13	12.5	6.0	-6.5	35	2010-11	14.7	6.5	-8.2	Improved
Adults with poor health-related quality of life (Hispanic ethnicity)	2015	33	26	-7	24	2013	34	26	-8	Improved
Adults who smoke (black race)	2015	22	17	-5	20	2013	22	18	-4	No Change
Adults who are obese (black race)	2015	41	29	-12	37	2013	41	29	-12	No Change
Adults who have lost six or more teeth (black race)	2014	15	10	-5	31	2012	17	10	-7	Improved

Table 3. Summary of Equity Indicator Change

CHANGE IN EQUITY GAP					
	2017 Scorecard rankings	Indicators with trends	No change in gap	Gap narrowed/ vulnerable group improved	Gap widened/ vulnerable group worsened
Equity Dimension	37	31	8	18	5
Low Income	32	17	4	11	2
Race/Ethnicity	38	14	4	7	3

Notes:

Cover Page. (a) The 2017 Scorecard rankings generally reflect 2014 or 2015 data; Baseline rankings generally reflect 2012 or 2013 data. The Baseline rankings generally align with Baseline rankings reported in the December 2015 State Scorecard report. The 2017 State Scorecard added or revised several performance measures relative to what was reported in the December 2015 Scorecard report; overall and dimension rankings are not strictly comparable between these reports. **(b)** Improved or worsened denotes a change of at least one-half (0.5) of a standard deviation (a statistical measure of variation) larger than the indicator's distribution among all states over the two time points. No change denotes no change in rate or a change of less than one-half of a standard deviation. The Equity dimension is separated into two subdimensions, Income and Race/Ethnicity. For interpretation of changes in the Equity dimension, see Table 2, note (b) below. **(c)** The table shows the estimated impact if this state's performance improved to the rate of the best-performing state for selected Scorecard indicators. Benchmark states, those with the best rate, have an estimated impact of zero (0).

Table 1. (*) Data not available for this state. **(--)** Historical data not available or not comparable over time. **(a)** Substantial change (improvement or worsening) refers to a change between the baseline and current time periods of at least 0.5 standard deviations. **(b)** Hospital admissions among Medicare beneficiaries for ambulatory care-sensitive conditions are displayed here separately for two age ranges, but counted as a single indicator in tallies of improvement.

Table 2. (*) Data not available for this state. **(--)** Historic data not available or not comparable over time. **(a)** Gaps measure the difference between the most vulnerable group in this state, by income or race/ethnicity, and the U.S. national average for each indicator. **(b)** Improvement indicates that the gap between this state's vulnerable population and the U.S. average has narrowed AND that the vulnerable group rate in this state has improved. Worsening indicates that the gap between this state's vulnerable population and the U.S. average has widened AND that the vulnerable group rate in this state has worsened. No change indicates that either the gap narrowed but the vulnerable group rate worsened, or the vulnerable group rate improved but the gap widened. **(c)** Different data years were used in the equity analysis than were reported for the entire state population rate. **(d)** Measures constructed from 20% Medicare sample for the equity analysis. Data for equity analysis provided by A. Jha, Harvard School of Public health. Refer to the 2017 State Scorecard report appendix for source information for entire state population rate. **(e)** Gaps are based on the state's nonwhite population with the largest observed difference from the U.S. average. The racial/ethnic minority with the largest gap is noted for each indicator. Race/ethnicity is generally defined as white race (non-Hispanic), black race (non-Hispanic), Hispanic ethnicity (can include individuals of any race), and other race (non-Hispanic) which includes individuals who self-identify as being some race/ethnicity not otherwise categorized.